

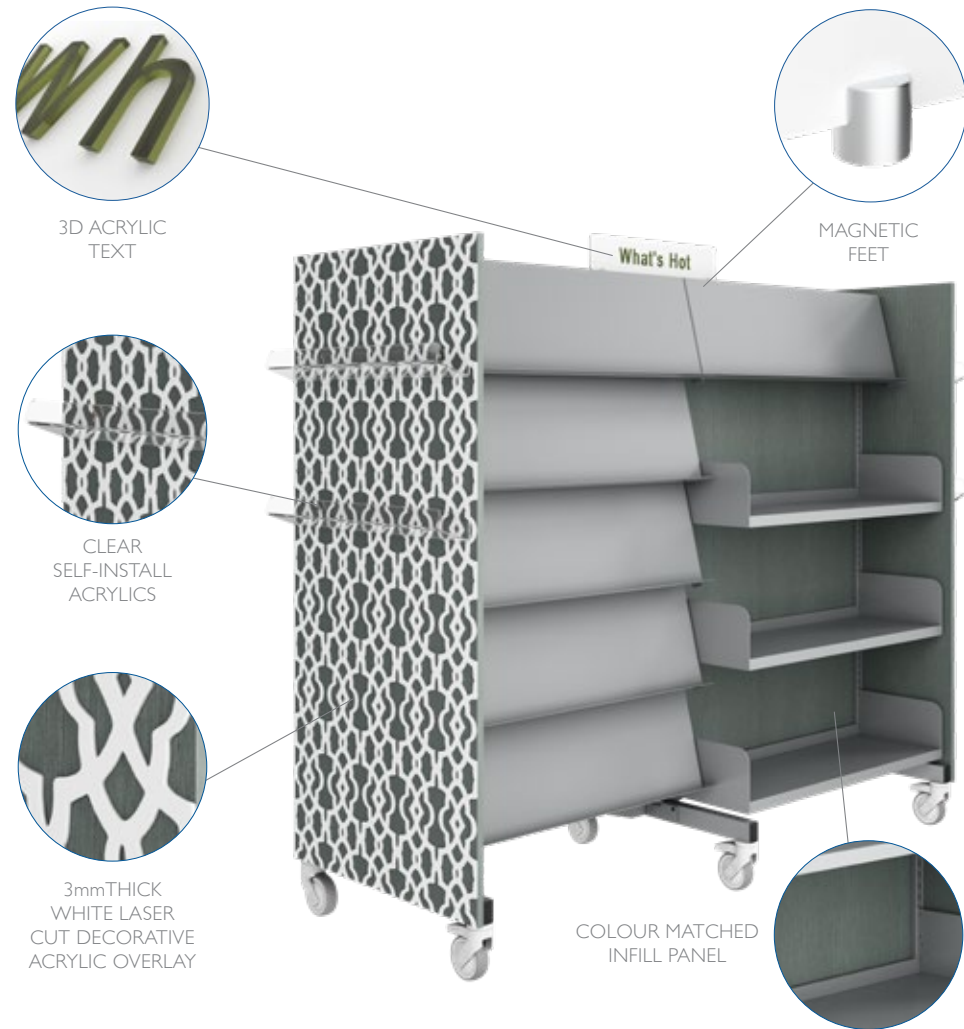
DESIGNER SERIES | MOROCCO



Sophisticated in both style and fabrication, Morocco features 3mm thick laser cut white lattice that is overlaid on New Graphite laminate.

Clear acrylics ensure the focus remains on books and the decorative backdrop.

These stunning bay ends are teamed with Metallic Silver shelves and completed with white signage and 3D olive lettering.



EACH UNIT INCLUDES:

- SHELVES** Metallic Silver powder coat
12 x display shelves
3 Fiction flat shelves (Side A)
3 Nonfiction flat shelves (Side B)

- BAY END PANELS** 25mm thick New Graphite laminate board to both ends with matching 2mm ABS edging.
3mm thick laser cut white acrylic overlay (pre-applied).

- INFILL PANELS** 18mm thick New Graphite laminate board.

- WHEELS** White German engineered 100mmDIA lockable wheels rated to a combined load rating of 600kg.

- ACRYLICS** Each unit is supplied with 4 clear self-install acrylic shelves that attach to bay end panels (2 per panel).

- SIGNAGE** Two matt white acrylic plates (What's Hot & New Books). Featuring 3D letters laser cut from clear acrylic and overlaid with rich olive vinyl to enhance the 3D effect. Supplied with silver brushed metal magnetic feet.

- COMPLETE KIT** 2-bay, double sided unit as pictured/same layout on reverse side. 1500mmH on 125mm wheels.

CODE: DS003



3mm THICK
WHITE LASER
CUT DECORATIVE
ACRYLIC OVERLAY